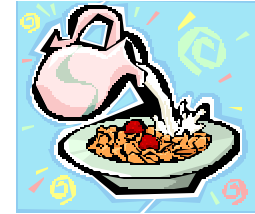




NOVEMBER 2008
THE TOMAHAWK EXPRESS
Middle/High School
Breakfast Menu



Available Daily
 Assorted Cereal, Toast with Margarine,
 Bagel & Cream Cheese, Yogurt,
 Assorted Fruit & Juice

MONDAY	TUESDAY	WEDNESDAY	THURSDAY	FRIDAY
3 Cereal Choice Whole Wheat Toast Fruit or Juice Cold Milk	4 Colby Cheese Omelet Whole Wheat Toast Fruit or Juice Cold Milk	5 Cereal Choice Whole Wheat Toast Fruit or Juice Cold Milk	6 2 Pancakes 1 Sausage Patty Fruit or Juice Cold Milk	7 Cereal Choice Whole Wheat Toast Fruit or Juice Cold Milk
10 Cereal Choice Whole Wheat Toast Fruit or Juice Cold Milk	11 NO SCHOOL Veteran's Day 	12 Cereal Choice Whole Wheat Toast Fruit or Juice Cold Milk	13 2 Waffles Warm Maple Syrup Fruit or Juice Cold Milk	14 Cereal Choice Granola Bar Fruit or Juice Cold Milk
17 Cereal Choice Whole Wheat Toast Fruit or Juice Cold Milk	18 Egg & Cheese on a Biscuit Fruit or Juice Cold Milk	19 Cereal Choice Whole Wheat Toast Fruit or Juice Cold Milk	20 Cinnamon Pop Tart Whole Wheat Toast Fruit or Juice Cold Milk	21 Cereal Choice Whole Wheat Toast Fruit or Juice Cold Milk
24 Cereal Choice Whole Wheat Toast Fruit or Juice Cold Milk	25 Hard Boiled Egg Apple Cinnamon Muffin Fruit or Juice Cold Milk	26 	27 NO SCHOOL Thanksgiving Recess	28 
Breakfast Prices Student, daily - \$1.00 Weekly - \$5.00 Reduced, daily - \$.25 Weekly - \$1.25 Variety Milk - \$.40 Adult meal - \$2.00		EAT BREAKFAST! Keep Fuel In Your Tank!!!		THINK BREAKFAST! 

Contact Linda Snyder, Manager @ 654-9005 x3114 or SnyderL@CorinthCSD.com
 On our website, www.Corinthcsd.com, you can view menus, download a 2008-2009 Free &
 Reduced Meal Application, and make meal payments online using PaySchools! Prepayment
 envelopes are also available through cashier. Set up your online School Dining account today
 and view all transactions! Contact Linda for log in information.

Menu Subject To Change Without Notice